

T Series

Magnetic Coupled External Gear Pump
Non-Pulsing Flow, Positive Displacement,
Accurate, Leak Free, Chemical Resistant, Long Life



Flow Rates: < 20 GPH to 650 GPH
 < 75 L/Hr to 2460 L/Hr

Temperatures: -50°F to 350°F
 -46°C to 176°C

Differential Pressures: 250 PSI
 17.2 bar

System Pressures: 500 PSI
 34.5 bar

Viscosity: 0.3 to 2000 cps +

Magnet Torque: 240 in-oz to 460 in-oz

Magnet Materials: Samarium Cobalt

Metal Wetted Parts: 316 Stainless Steel
 or Hastelloy C276

Ports: 3/8-18 NPT; T2.6, T5.3 & T7.9
 3/4-14 NPT Inlet & 1/2-14 NPT Outlet,
 T8.0 & T12. only

Speed: 5,000 RPM maximum

Service Life: Up to 20,000 hours +
 based on water

Suction Vacuum: 28.5 " Hg
 724 mm Hg

Self Priming: Yes, wetted

Size: 3" diameter pumphead

Flow @ 3500 RPM

MODEL ml/rev	GPH @ 0 PSI	L/Hr @ 0 bar	GPH @ PSI		L/Hr @ bar		Continuous Duty Limit		Intermittent Duty Limit	
			Differential Pressure		Differential Pressure		PSI	bar	PSI	bar
2.6	137	518	114 @ 150		431 @ 10.3		150	10.3	250	17.2
5.3	279	1056	249 @ 100		942 @ 6.9		100	6.9	145	10
7.9	416	1575	384 @ 70		1453 @ 4.8		70	4.8	95	6.6
8.0	421	1593	353 @ 150		1336 @ 10.3		125	8.6	150	10.3
12.	650	2460	600 @ 100		2270 @ 6.9		100	6.9	120	8.2

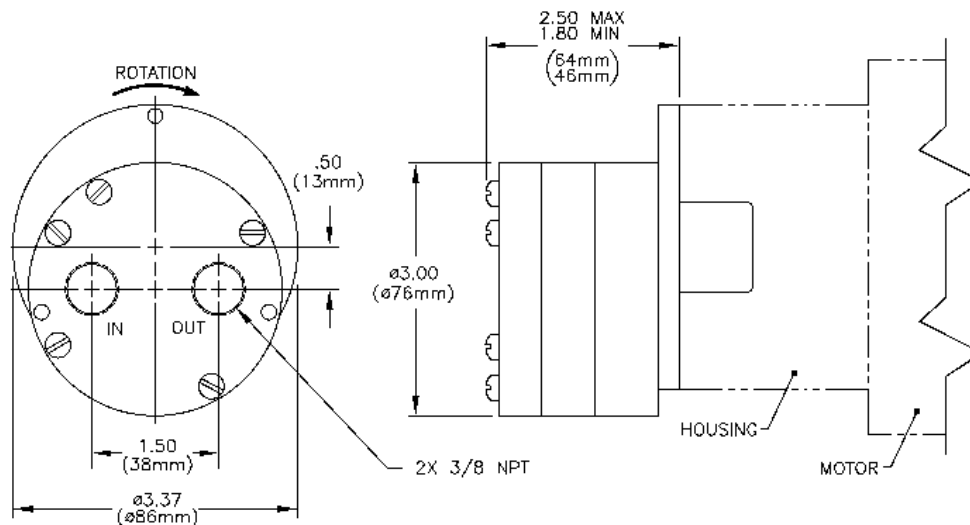
Performance Estimate Based on 68°F (20°C) Clean Deionized Water @ 1.0 centipoise fluid viscosity

Tuthill Pump Group specializes in OEM applications. All pumps have a wide range of options.

Consult factory for other options and performance requirements.

Applications: Laboratory Equipment, Water Purification, Water Treatment, Lubrication, Fluid Transfer, Recirculation, Cooling, Chemical Metering, Fluid Sampling, Temperature Control, Additive Delivery, Proportioning, Chemical Handling, Oil Filtration, Acids, Heat Transfer, X-Ray Equipment, General Use.

T-SERIES



Tuthill Pump Group Concord Operations

5143 Port Chicago Highway
 Concord, California 94520 USA
 Tel: 925.676.8000 Fax: 925.676.8151
 email: concord@tuthill.com
 www.pumptales.com

Materials of Construction

Metal Wetted Parts: 316 Stainless Steel or Hastelloy C276

Gears & Bearings: PPS (Polyphenylene Sulfide) or PEEK (Polyetheretherketone)

O-Rings: Viton or Teflon

Ports: 3/8-18 NPT; T2.6, T5.3 & T7.9 3/4-14 NPT Inlet & 1/2-14 NPT Outlet; T8.0 & T12. only

Magnet Shrouds: Encapsulated Samarium Cobalt

Magnet Torque: 240 in-oz or 460 in-oz

Suction Vacuum: Pumps self prime when wetted with operating fluid to 28.5 Hg" (724mm Hg). Dry lift not recommended. Fluid viscosity, temperature and pressure may affect the performance.

Motors: AC, DC, Air, Variable Speed or Motor Mate Adapter Kits

Operating Temperatures above 140 °F (60 °C)

In the T Series Product line we offer special sizing option for operating at temperatures above 140°F (60 °C). Consult factory for details.

Gear & Bearing Material Temperature Limit

PPS limit is approximately 250 °F (121 °C)

Peek, Carbon and Metal limits are approximately 350°F (176 °C)

If possible, for temperatures above 250 °F (121 °C) Carbon bearings should be selected.

